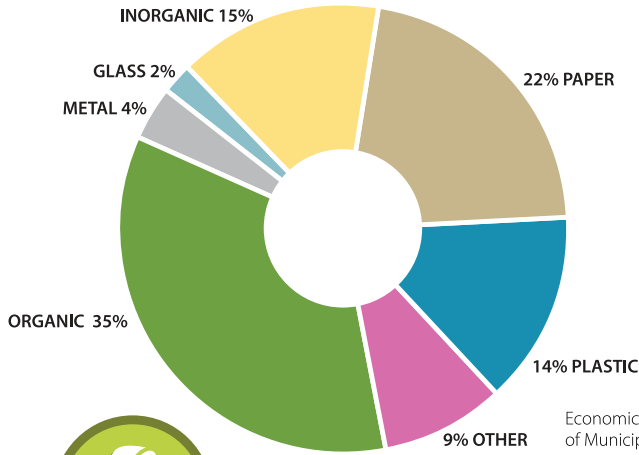


MICHIGAN MUNICIPAL SOLID WASTE COMPOSITION (mean% by weight)



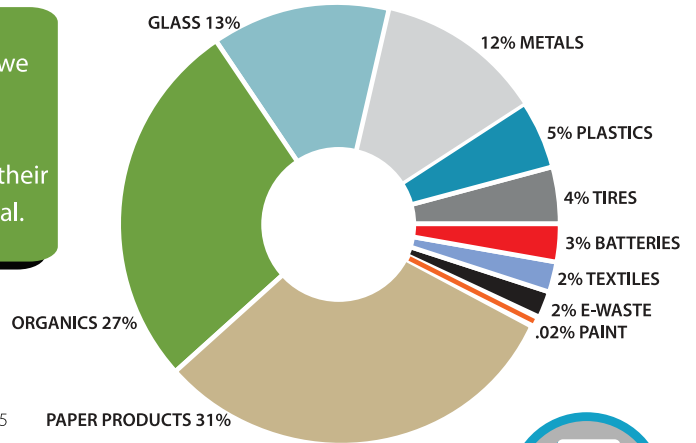
Economic Impact Potential and Characterization of Municipal Solid Waste in Michigan 2016

Michigan's move from open dumps to modern landfills forty years ago represented an important shift in environmental protection and remains the foundation of Michigan solid waste policy today. That policy, however, requires counties to assure adequate disposal capacity for waste, with little regard for the value of the materials being discarded.



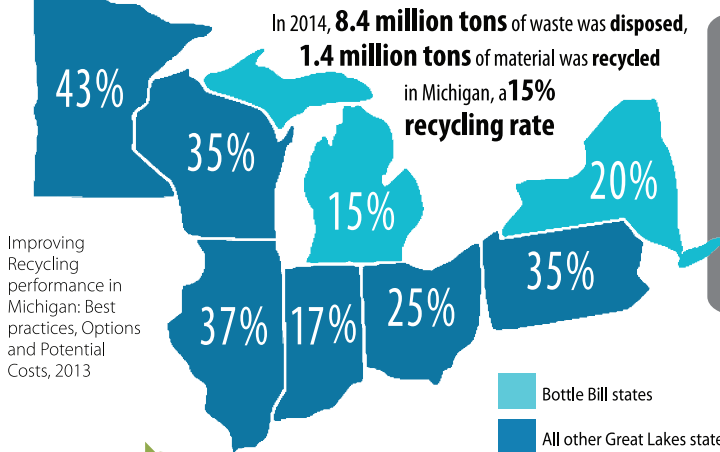
Forty years later, we know more about the materials we pay to throw away. When diverted from disposal – collected, processed, and sold as commodities to manufacturers – those commodities have value and their repurposing reduces costs and the impacts of disposal.

COMPOSITION OF CURRENT RECYCLING STREAM



Measuring Recycling in the State of Michigan, May 2015

RECYCLING RATES FOR GREAT LAKES STATES



Improving Recycling performance in Michigan: Best practices, Options and Potential Costs, 2013

Michigan lags behind most Great Lakes states in recycling. We must create an environment where Michigan businesses, industries, and residents can accomplish their own sustainability goals and contribute to a financially and environmentally sustainable future, creating resilient communities across the state.



The deliberations of the appointed members of the **Governor's Recycling Council (GRC)** and Department of Environmental Quality led **Solid Waste and Sustainability Advisory Panel (SWSAP)** have culminated in the development of two separate but complementary reports and sets of recommendations.



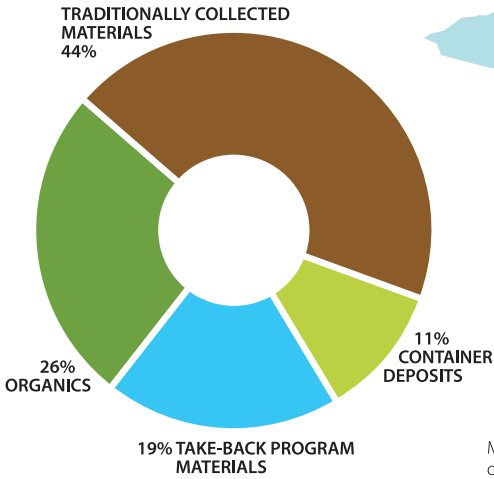
SWSAP Report



GRC Report

These separate stakeholder advisory groups have been recently joined together and make up the Solid Waste and Recycling Advisors. Their collective charge is to guide the state's solid waste, sustainability, and recycling goals especially as it relates to the development of legislative language.

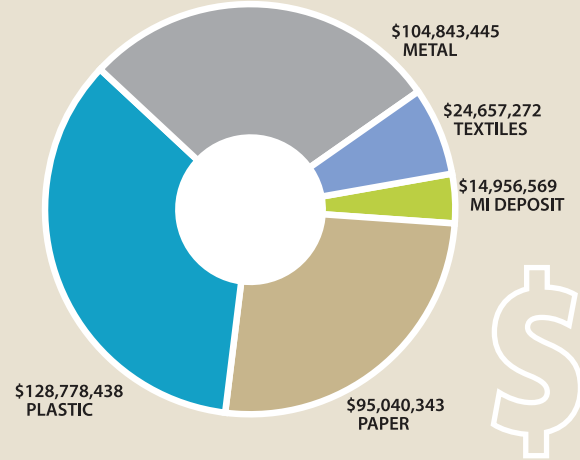
MATERIAL RECYCLED BY CATEGORY IN 2013



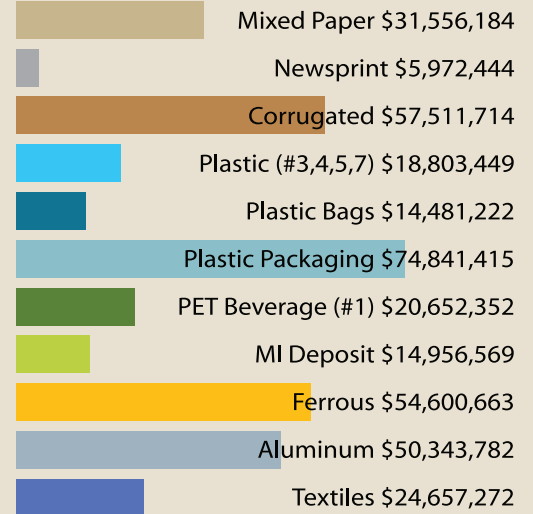
More than **1/2** of Michigan's recycling rate is the **direct result of state policy**

Measuring Recycling in the State of Michigan, May 2015

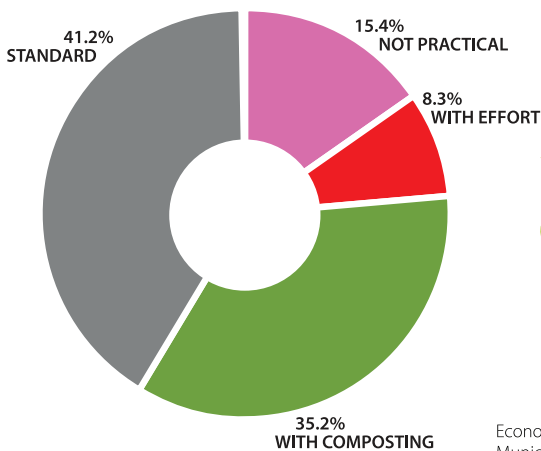
POTENTIAL VALUE OF MI MSW MATERIAL DISCARDED



POTENTIAL VALUE OF MI MSW COMMODITIES DISCARDED



MICHIGAN MSW MATERIAL BY EASE OF RECYCLING



More than **70%** of our waste stream is **READILY RECYCLABLE**

Economic Impact Potential and Characterization of Municipal Solid Waste in Michigan 2016

EMPLOYMENT AND TOTAL FINANCIAL EFFECT OF INCREASED RECYCLING

Potential Value of Reclaimed Materials	Jobs Multiplier	Jobs Created	Total Effect Multiplier	Total Economic Impact
\$368,276,066	7.11	2,619	1.08	\$398,732,497

Economic Impact Potential and Characterization of Municipal Solid Waste in Michigan 2016

"The resources and services provided by our ecosystem are indispensable to economic activity. Consequently, economic activity that serves to extend the productive life of natural resources and minimize the waste byproducts of the economy's productive activity must be a cardinal element of any lasting economic system. Recycling represents one of those unique opportunities in which both public and private investment can cooperatively promote robust and sustainable economic activity while concurrently supporting environmental protection."

Mike Csapo, General Manager, RRRASOC

By meeting the Governor's recycling goals and capturing material that's otherwise discarded, Michigan would experience a positive economic impact of **\$400 million** annually.

2011 State of Recycling in Michigan

In Michigan, there are an estimated **2,242** establishments in the recycling and reuse industry with receipts of **\$11.6 billion**, a payroll of about **\$2.06 billion**, and employment of **61,700**.



PO Box 10070
Lansing, MI 48901
(517) 974-3672
#RecycleMI

The Michigan Recycling Coalition fosters sustainability by leading, educating and mobilizing business, government, nonprofits, and individuals to advance their own and collective resource recovery initiatives in Michigan.

michiganrecycles.org

